

6.3. HP-501; HP-502; HP-503

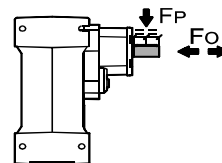
HP-501							
prędkość na wejściu n_1 [1/min]	prędkość na wyjściu n_2 [1/min]	przełożenie i	moc nominalna P_1 [kW]	moment nominalny M_N [Nm]	moc silnika P_S [kW]	moment na wyjściu M_2 [Nm]	wsp. mocy f
1400	528	2.65	36.7	650	22	375	1.7
	409	3.42	32.8	750	22	485	1.6
	304	4.6	30.9	950	22	650	1.5
	256	5.46	27.4	1000	22	770	1.3
	211	6.64	26.5	1175	22	935	1.3

HP-502							
prędkość na wejściu n_1 [1/min]	prędkość na wyjściu n_2 [1/min]	przełożenie i	moc nominalna P_1 [kW]	moment nominalny M_N [Nm]	moc silnika P_S [kW]	moment na wyjściu M_2 [Nm]	wsp. mocy f
2800* <small>*tylko do pracy dorywczej</small>	468.2	5.98	38.3	750	22	430	1.74
	394.4	7.1	37.9	880	22	510	1.73
	324.4	8.63	35.8	1015	22	620	1.64
	248.4	11.27	30.5	1125	22	810	1.39
	209.3	13.38	29.1	1275	22	965	1.32
	183.7	15.24	28.6	1425	22	1100	1.30
	172.2	16.26	29.6	1575	22	1170	1.35
	154.8	18.09	26.6	1575	22	1305	1.21
	141.3	19.82	23.8	1545	22	1430	1.08
	127.4	21.98	21.9	1575	22	1585	0.99
	119.0	23.53	20.4	1575	18.5	1425	1.11
	115.5	24.25	18.3	1455	18.5	1470	0.99
	97.2	28.8	16.7	1575	15	1415	1.11
	80.0	34.99	13.7	1575	11	1260	1.25
	67.2	41.64	10.8	1470	11	1500	0.98
	55.3	50.6	9.5	1575	7.5	1245	1.27
1400	234.1	5.98	25.5	1000	22	860	1.16
	197.2	7.1	25.3	1175	22	1025	1.15
	162.2	8.63	23.9	1350	22	1245	1.08
	124.2	11.27	20.3	1500	18.5	1365	1.10
	104.6	13.38	19.4	1700	18.5	1620	1.05
	91.9	15.24	19.0	1900	18.5	1845	1.03
	86.1	16.26	19.7	2100	18.5	1970	1.07
	77.4	18.09	17.7	2100	18.5	2190	0.96
	70.6	19.82	15.9	2060	15	1945	1.06
	63.7	21.98	14.6	2100	15	2160	0.97
	59.5	23.53	13.6	2100	11	1695	1.24
	57.7	24.25	12.2	1940	11	1745	1.11
	48.6	28.8	11.1	2100	11	2075	1.01
	40.0	34.99	9.2	2100	7.5	1720	1.22
33.6	41.64	7.2	1960	7.5	2045	0.96	
27.7	50.6	6.3	2100	5.5	1820	1.15	
900	150.5	5.98	17.0	1035	15	915	1.13
	126.8	7.1	16.8	1220	15	1085	1.12
	104.3	8.63	15.9	1400	15	1320	1.06
	79.9	11.27	13.5	1555	11	1265	1.23
	67.3	13.38	12.9	1765	11	1500	1.18
	59.1	15.24	12.7	1970	11	1710	1.15
	55.4	16.26	13.1	2180	11	1820	1.20
	49.8	18.09	11.8	2180	11	2025	1.08
	45.4	19.82	10.6	2135	11	2220	0.96
	40.9	21.98	9.7	2180	7.5	1680	1.30
	38.2	23.53	9.1	2180	7.5	1800	1.21
	37.1	24.25	8.1	2010	7.5	1855	1.08
	31.3	28.8	7.4	2180	7.5	2200	0.99
	25.7	34.99	6.1	2180	5.5	1960	1.11
21.6	41.64	4.8	2035	4	1695	1.20	
17.8	50.6	4.2	2180	4	2060	1.06	

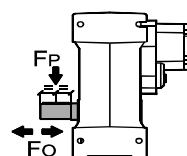
HP-503							
prędkość na wejściu n_1 [1/min]	prędkość na wyjściu n_2 [1/min]	przełożenie i	moc nominalna P_1 [kW]	moment nominalny M_N [Nm]	moc silnika P_S [kW]	moment na wyjściu M_2 [Nm]	wsp. mocy f
1400	28.8	48.55	6.7	2100	5.5	1710	1.23
	24.3	57.64	5.7	2100	5.5	2035	1.03
	21.3	65.64	5.0	2100	4	1685	1.25
	20.0	70.04	4.7	2100	4	1795	1.17
	18.0	77.93	4.20	2100	4	2000	1.05
	16.4	85.36	3.84	2100	3	1640	1.28
	14.8	94.7	3.46	2100	3	1820	1.15
	13.8	101.35	3.23	2100	3	1950	1.08
	11.4	123.15	2.66	2100	2.2	1735	1.21
	9.3	150.73	2.17	2100	2.2	2125	0.99
	7.8	179.39	1.83	2100	1.5	1725	1.22
	6.4	217.98	1.50	2100	1.5	2095	1.00
	5.7	247.03	1.23	1950	1.1	1740	1.12
	4.7	300.17	1.09	2100	1.1	2115	0.99
900	18.5	48.55	4.50	2180	4	1935	1.13
	15.6	57.64	3.79	2180	3	1725	1.26
	13.7	65.64	3.33	2180	3	1965	1.11
	12.8	70.04	3.12	2180	3	2095	1.04
	11.5	77.93	2.80	2180	2.2	1710	1.27
	10.5	85.36	2.56	2180	2.2	1875	1.16
	9.5	94.7	2.31	2180	2.2	2080	1.05
	8.9	101.35	2.15	2180	2.2	2225	0.98
	7.3	123.15	1.77	2180	1.5	1845	1.18
	6.0	150.73	1.45	2180	1.5	2255	0.97
	5.0	179.39	1.22	2180	1.1	1970	1.11
	4.1	217.98	1.00	2180	0.75	1630	1.34
	3.6	247.03	0.82	2020	0.75	1850	1.09
	3.0	300.17	0.73	2180	0.75	2245	0.97

B3	B6	B7	B8	V5	V6	
5.7 Lt	7 Lt	7.9 Lt	5.7 Lt	10.2 Lt	5.6 Lt	HP-501
5.6 Lt	6.8 Lt	7.8 Lt	5.6 Lt	10 Lt	5.5 Lt	HP-502
5.8 Lt	7.1 Lt	8.2 Lt	5.8 Lt	10.8 Lt	6 Lt	HP-503
standard			Orlen Transol 460			

DOPUSZCZALNE OBCIĄŻENIE WAŁÓW [daN]



	n_1	2800	1400	900	500
HP-502	F_P		350	420	450
	F_O		70	84	90
HP-503	F_P		225	250	300
	F_O		45	50	60



n_2	300	250	200	140	120
F_P	460	500	530	560	570
F_O	92	100	106	112	114
n_2	85	70	40	15	
F_P	650	700	900	1200	
F_O	130	140	180	240	

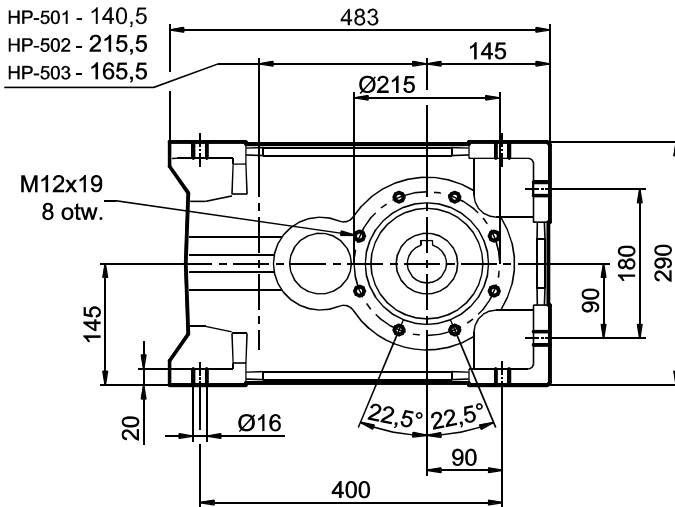
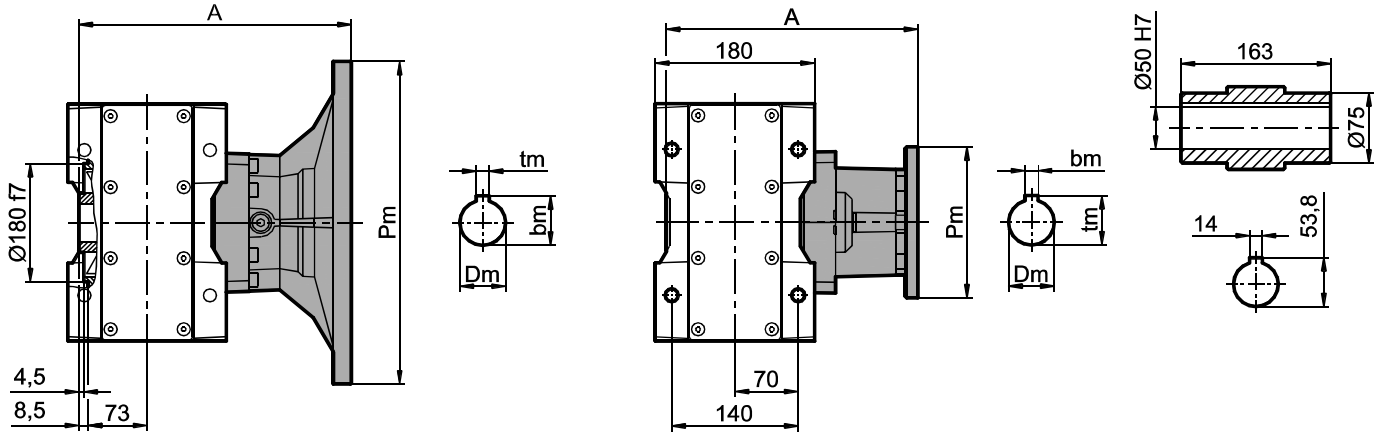


Wersja podstawowa

HP-501 HP-502

HP-503

Tuleja zdawcza

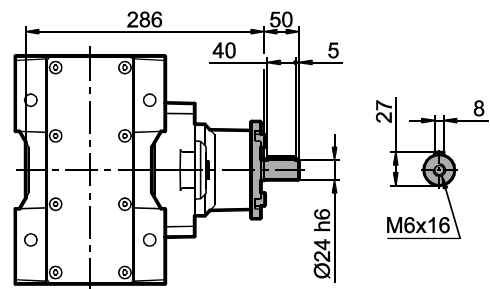
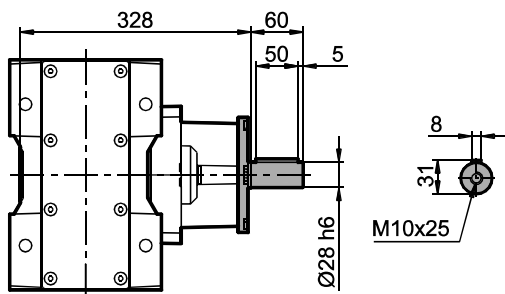


	silnik	Pm	Dm	tm	bm	A
HP-501	160B5	350	42	45.5	12	336
	180B5	350	48	51.5	14	336
HP-502	100/112B5	250	28	31.5	8	337.5
	132B5	300	38	41.5	10	341.5
	160B5	350	42	45.5	12	352.5
	180B5	350	48	51.5	14	352.5
HP-503	71B5	160	14	16	5	292.5
	80B14	120	19	21.8	6	294.5
	80B5	200	19	21.8	6	294.5
	90B14	140	24	27.5	8	294.5
	90B5	200	24	27.5	8	294.5
	100/112B14	160	28	31.5	8	303.5
	100/112B5	250	28	31.5	8	303.5
132B14	200	38	41.5	10	321.5	
132B5	300	38	41.5	10	321.5	

Wał napędowy

HP-502

HP-503



Wał zdawczy

